

# TimeWarner Cable and Routers

---

There seems to be many people with problems getting a router to work with TimeWarner cable internet whose technical support are no help at all. This prompted me to write this article on how to do it.

There are a couple of issues with TimeWarner cable. The first is that that they mess around with the Domain servers on a regular basis usually late at night and the internet looks like it's connected but doesn't work and of course they will deny everything, it's always the clients machine.

Secondly if you have a dynamic IP number which is most likely (unless you paid the extra 25 bucks for a static IP) the IP Number changes and throws all of your connections off. People think it is resetting the hardware router (which it isn't of course) it's actually normal this is what dynamic IP Numbers do.

Lastly, somewhat tied to the second problem is the lack of DNS servers in the connection to the modem itself and when the dynamic IP changes so do the DNS servers IP's.

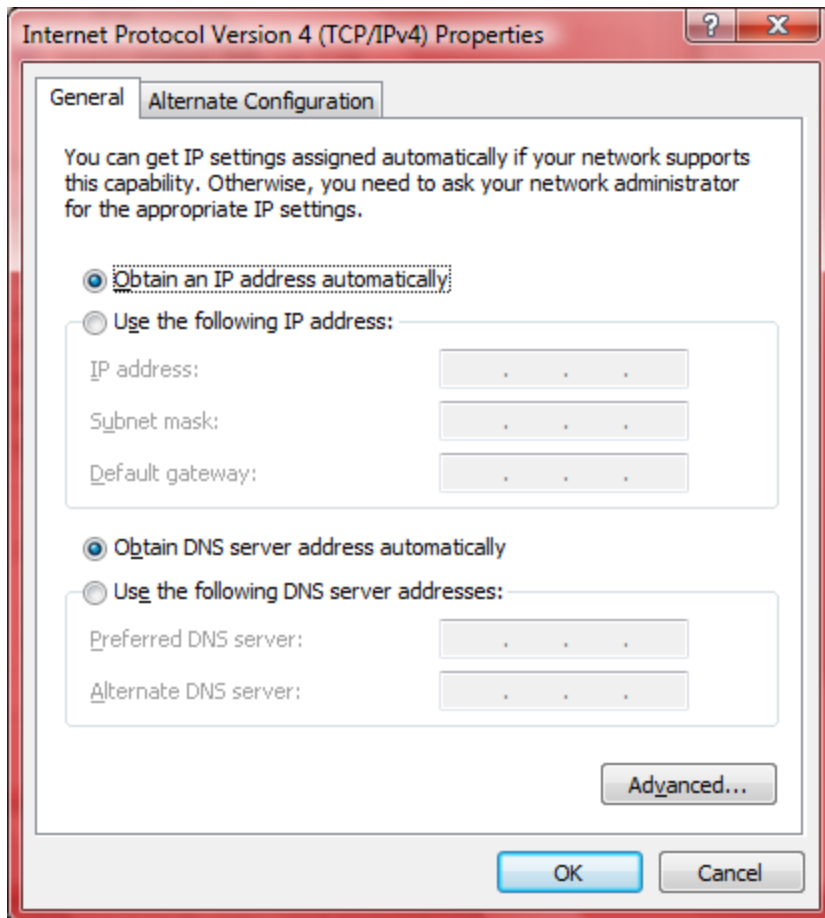
Many people assume it is hardware and TimeWarner will also tell you this, you will be on the "reset the machine, reset the modem bandwagon" all of which is absolute rubbish, nothing at all to do with the problems whatsoever.

What I am going to do show you how to fix all of these problems all at once, so you never again have dropped connections, whatever the techies do at TimeWarner.

The first thing to do is connect up the computer directly to the modem and make sure that you actually have a working connection.

Now follow these steps to add a router.

- 1) First Go to the internet and lookup <http://www.dnsserverlist.org/> you will find listed down the page a comment "Here are the top calculated DNS servers for your IP" followed by three numbers. Take a note of those you will need them later.
- 2) Now turn everything off and connect up your router between the modem and the computer. When you look at the network connections on the router you will see one of them is the input from the internet this is the one that plugs into your TimeWarner modem. Plug your computer into any of the remaining sockets.
- 3) With everything switched off go and make a coffee and wait for 5 minutes. It takes this long for the memory to clear (cache) in the TimeWarner Modem.
- 4) After 5 minutes boot everything up, some people say the order is important but I have never noticed any difference.
- 5) Now you need to configure your computer, find the network connections and open up the properties



- 6) It will probably look like this. So get the list you have of the DNS Servers select “use the following IP Address” and enter these numbers.

In IP Address:	192.168.1.10	The last number can be any number between 2 and 254
In Subnet Mask	255.255.255.0	This has to be exactly this
In Default Gateway	192.168.1.1	Normally this is your Router IP number

Preferred DNS server	192.168.1.1	Normally this is your Router IP number
----------------------	-------------	--

Press OK and your computer is done.

- 7) Now open up a Browser and type in 192.168.1.1 to configure your router. A configuration page should come up with a login, for example LinkSys is username “admin” password “admin”
- 8) You should see somewhere a setting “Obtain an IP automatically” make sure it’s selected.
- 9) At the top of the page you should also see the IP Number of the router which is 192.168.1.1, leave that as it is.

- 10) After logging in you will see a setting for "Local DHCP server" this needs to be selected, below this you will see Static DNS 1, 2 and 3. Enter the numbers that you got from the internet on your list in the beginning.
- 11) Finally save the settings and exit.
- 12) Your internet will now work, if it doesn't, turn everything off wait 5 minutes and restart it will then work.
- 13) When you want to add a new computer, add the same settings as you did above but change the last number of the IP address, for example instead of 192.168.1.10 make it 192.168.1.11 and so on for each computer. Plug the new computer into one of the remaining ports of your router.

So what have we done here?

It's quite simple really the TimeWarner connection thinks your router is a computer. The router then proceeds to distribute the connection with all of the computers on your own little home network. To cure the problems with the TimeWarner DNS machines we have used open and free DNS machines closest to your connection. If TimeWarner resets the DNS machines it doesn't matter you aren't using them anyway. When the dynamic IP Number changes (and the dynamic DNS servers) it happens all within the router and again you are not relying on the TimeWarner DNS machines so it doesn't affect your internal network IP Numbers, it just keeps working.

Your machines will all work exactly as they were meant to, you want wireless, plug a wireless modem into your router it will work straight away. You want TV plug in your SlingBox.

Happy surfing.